



**Bowayt Glass
Hardware Co.,Ltd**



Bowayt Glass Hardware Co.,Ltd

📍 Add: 13# Getian Street,Denggang,Lishui
Town,Nanhai District Foshan
City,Guangdong Province,China

👤 Cnt: Evan Huang
📱 Mob/Whatsapp:86-180 25979750
☎ Tel/Fax:86-757-8560-3543

✉ Email:bowaythardware@163.com

📘 PC: 528244

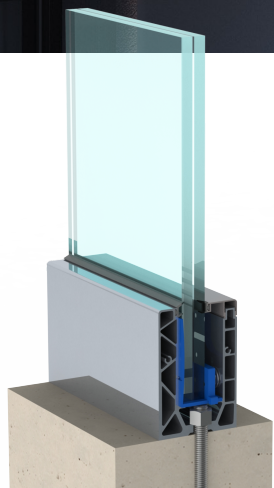
FB: www.facebook.com/bowaythardware
www.bowayt.com



**Frameless Glass
Railing Systems**

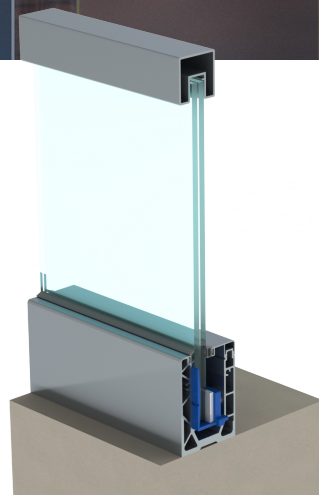


20-years Factory specialize in kinds of Railing and Glass Hardware



BBC-24-110

Fix on the floor are substantial
enough with Easy Installation



BBC-24-90

Fix On The Floor Extremely strong

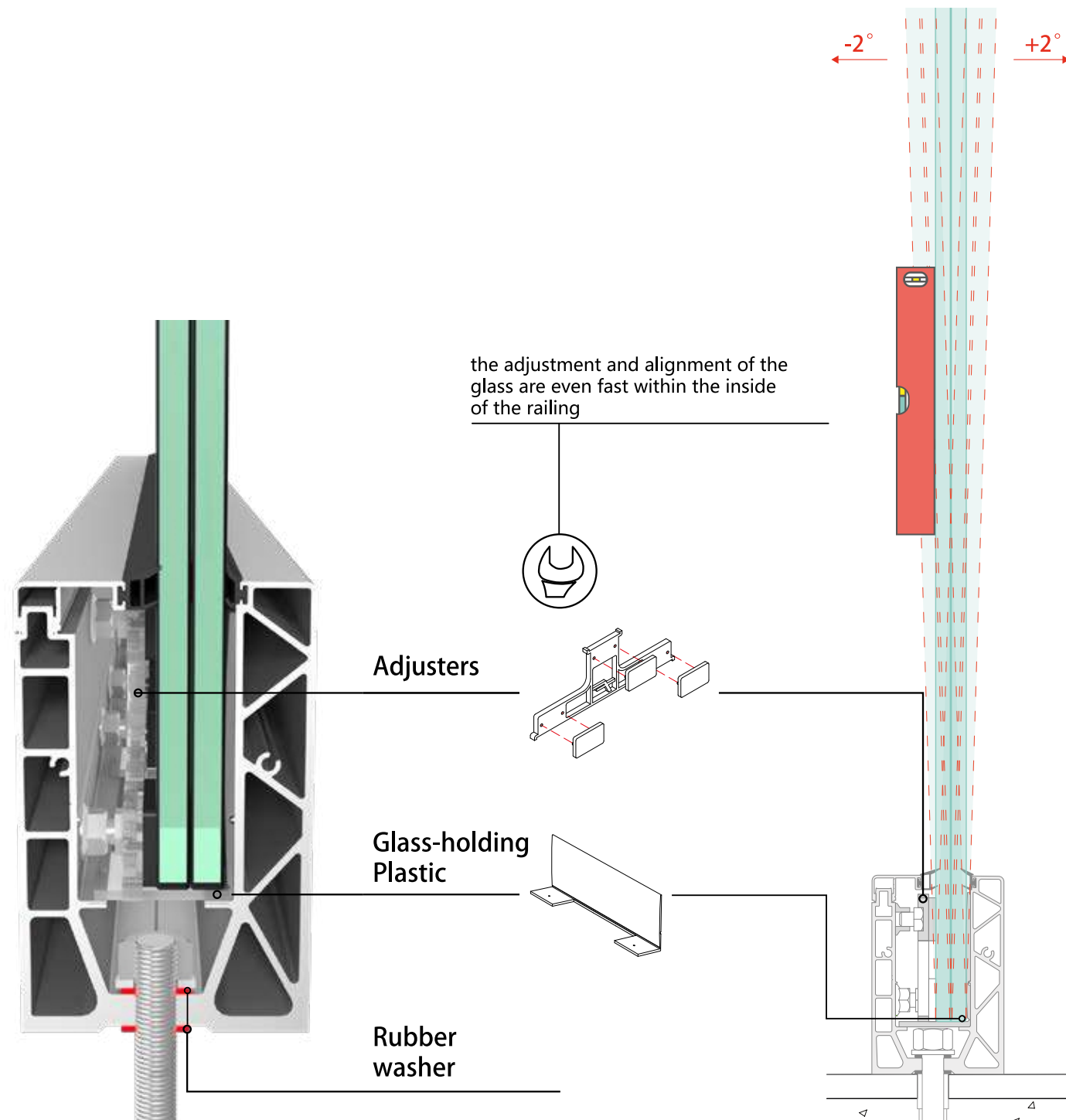


BBC-25-90

Fix on the floor with continuous curved base shoe

New System :BBC-24 Base Channel

This series features adjustable glass tilt for quicker installation and adjustment, enhancing product practicality.



bowayt®

Safety and onsite guidelines

ADVANTAGES:

- No external scaffolding is required
- Glass assembly, adjusting and vertical plumb only from the inside
- Work in full safety

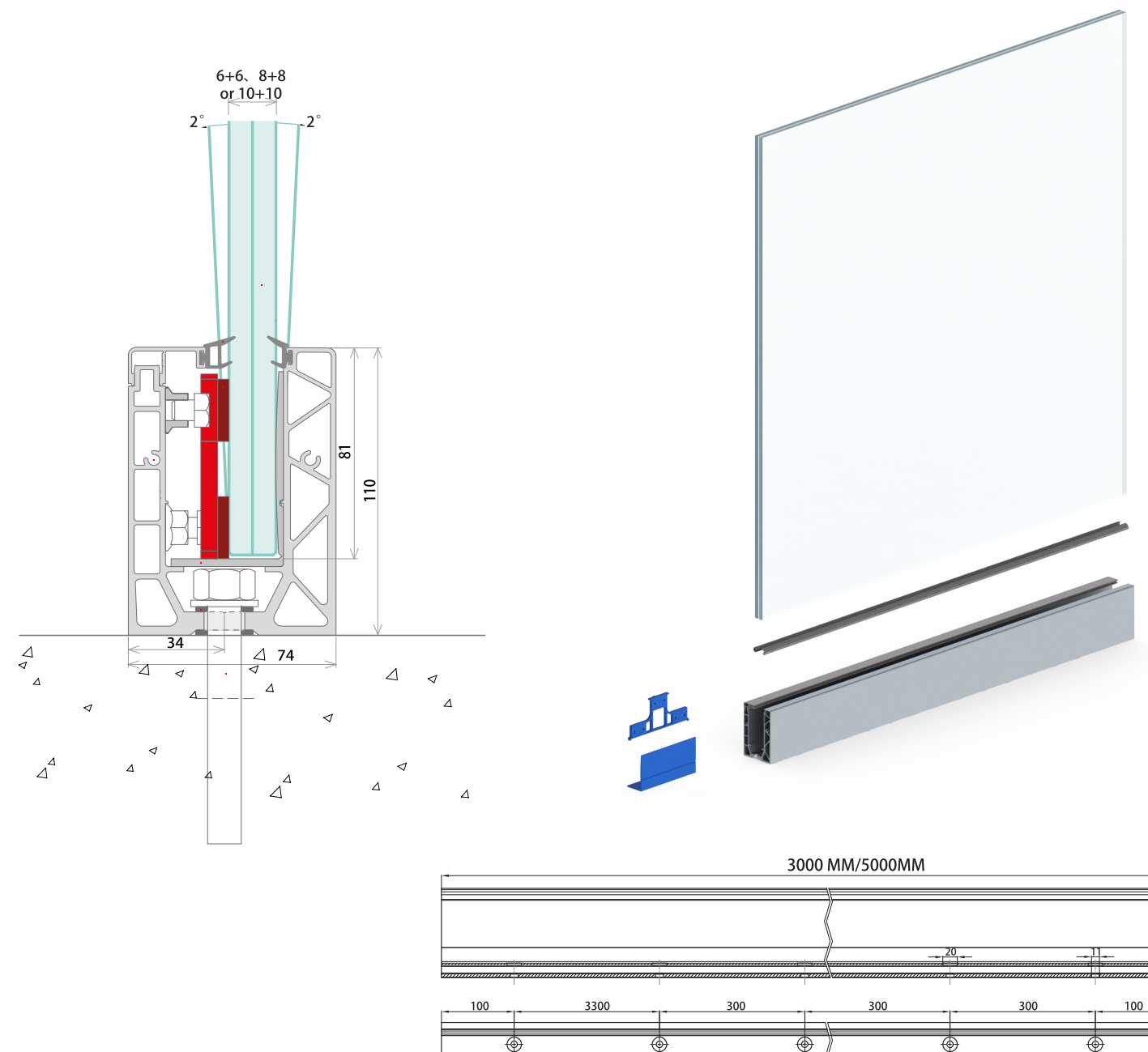
ASSEMBLY STEPS:

- ① Drilling of the floor and fixing of the aluminium profile
- ② Glass assembly
- ③ Adjustment and vertical plumb
- ④ Assembly of the internal cladding

* In case of installation without external scaffolding, make sure it is possible only with the authorization of the site safety manager. Assembly without scaffolding must only take place in complete safety.



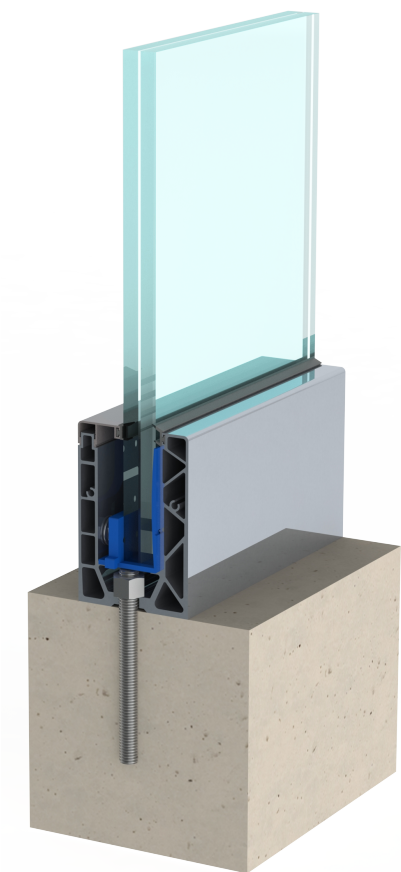
bowayt®



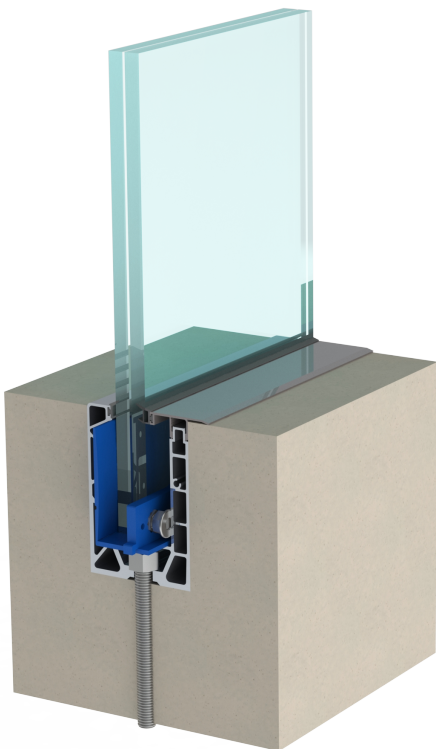
When extreme sturdiness is a prerequisite

An extremely sturdy solution ideal for spaces where increased safety is required, particularly in crowded places such as hotels, amusement terraces, high buildings, even for stadiums.

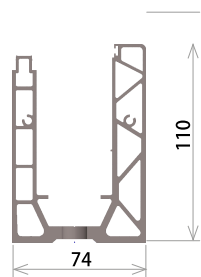
- / Base Shoe dimensions 74 x 110 mm.
- / Maximum height 1,2 m (from floor level and without handrail).
- / Linear horizontal load up to 3 KN/m.
- / 8+8 mm and 10+10 mm glass.



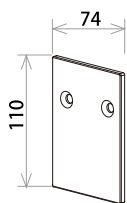
BBC-24-110A



BBC-24-110B



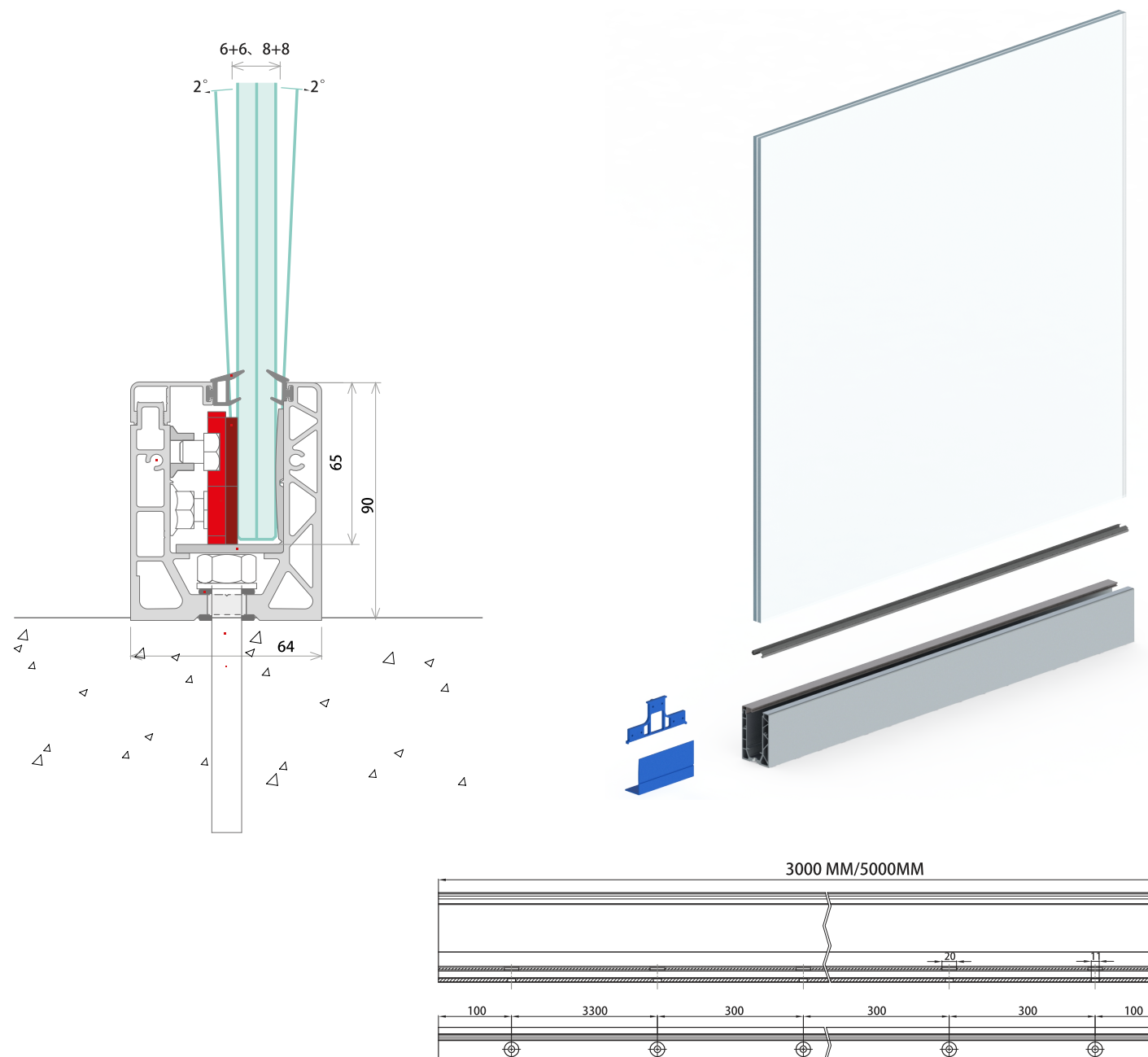
- BBC-24110 Base Shoe
- BBC-2401-01A Top Cladding
- BBC-2401-02A Concealed Cover
- BBC-2401-03A Profile Concealed Cover
- BBC-24110-1 Adjuster & Glass Holding Plastic



- BBC-24110-2 End Cap



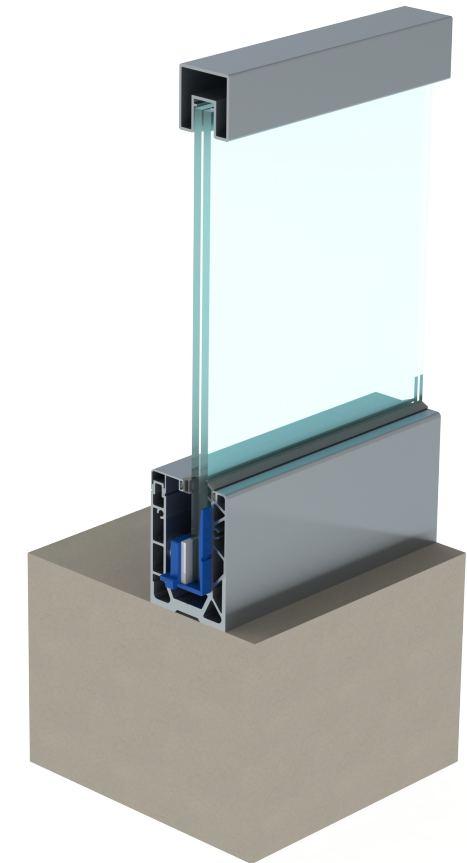
- BBC-2402 90° Corner Connector
- BBC-2403 180° Corner Connector
- BBC-2404 Water-removing pad
- BBC-2405 Rubber
- BBC-2406 Rubber



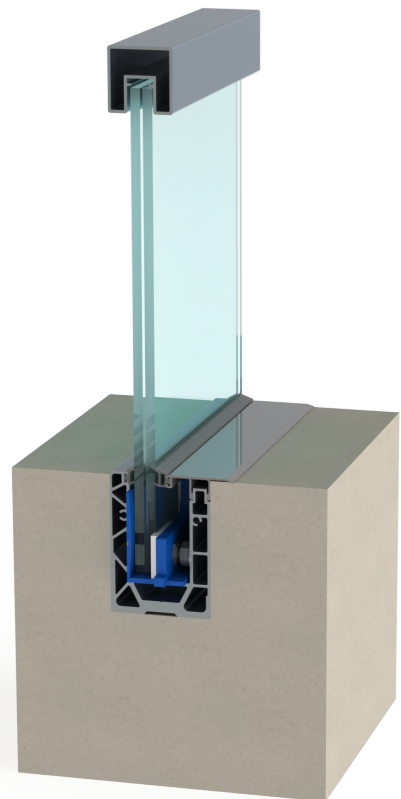
When extreme sturdiness is a prerequisite

An extremely sturdy solution ideal for spaces where increased safety is required, particularly in crowded places such as hotels, amusement terraces, high buildings, even for stadiums.

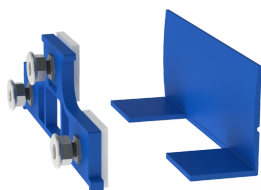
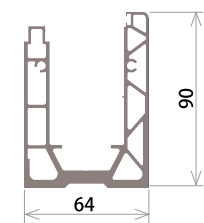
- / Base Shoe dimensions 64 x 90 mm.
- / Maximum height 1,2 m (from floor level and without handrail).
- / Linear horizontal load up to 2 KN/m.
- / 6+6 mm and 8+8 mm glass.



BBC-24-90A



BBC-24-90B



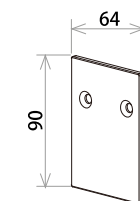
■ BBC-2490
Base Shoe

■ BBC-2401-01A
Top Cladding

■ BBC-2401-02A
Concealed Cover

■ BBC-2401-03A
Profile Concealed Cover

■ BBC-2490-1
Adjuster &
Glass Holding Plastic



■ BBC-2490-2
End Cap



■ BBC-2402
90° Corner Connector



■ BBC-2403
180° Corner Connector



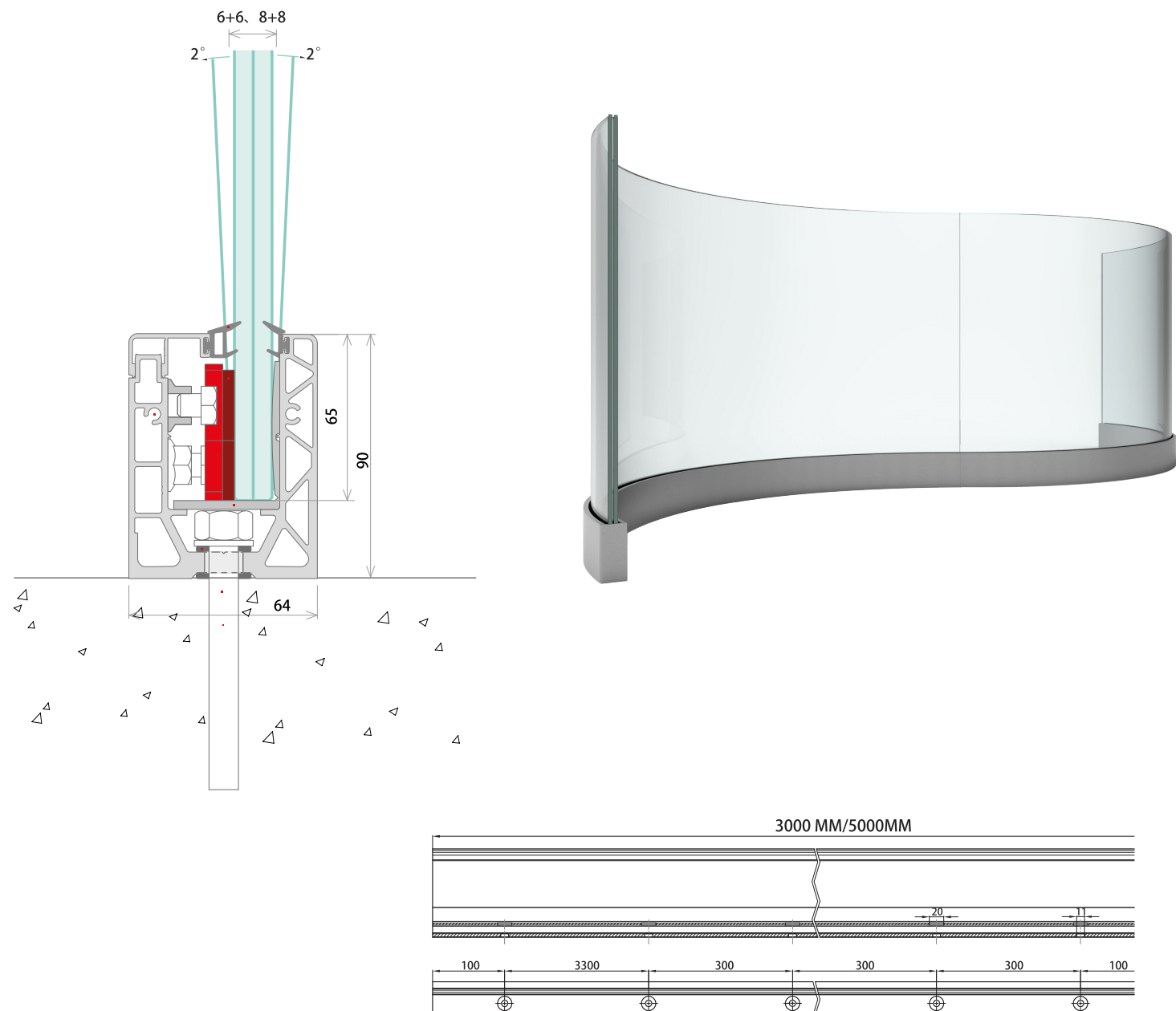
■ BBC-2404
Water-removing pad



■ BBC-2405
Rubber



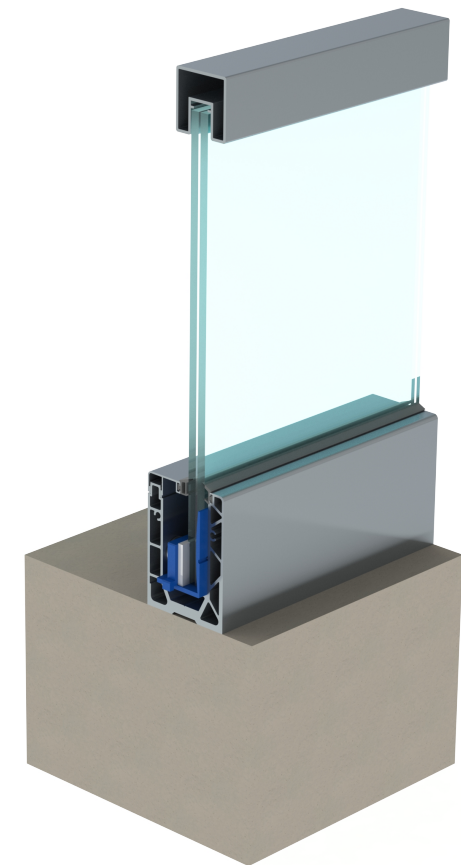
■ BBC-2406
Rubber



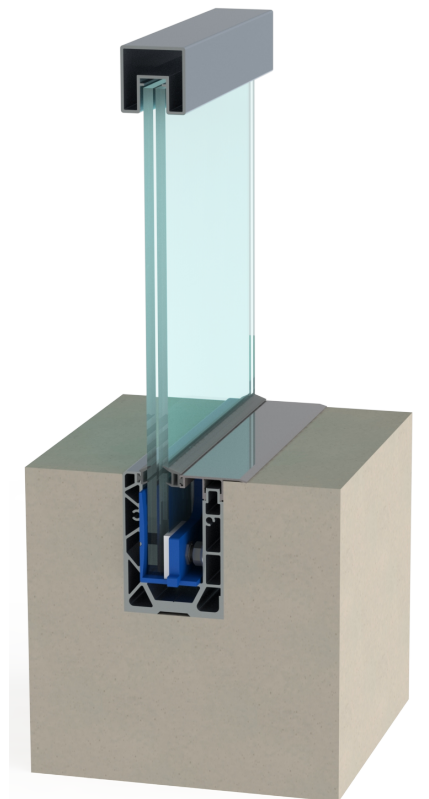
When extreme sturdiness is a prerequisite

An extremely sturdy solution ideal for spaces where increased safety is required, particularly in crowded places such as hotels, amusement terraces, high buildings, even for stadiums.

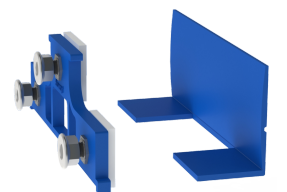
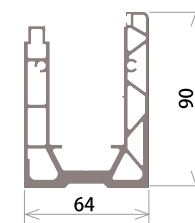
- / Base Shoe dimensions 64 x 90 mm.
- / Maximum height 1,2 m (from floor level and without handrail).
- / Linear horizontal load up to 2 KN/m.
- / 6+6 mm and 8+8 mm glass.



BBC-24-90A



BBC-24-90B



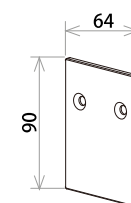
■ BBC-2490
Base Shoe

■ BBC-2401-01A
Top Cladding

■ BBC-2401-02A
Concealed Cover

■ BBC-2401-03A
Profile Concealed Cover

■ BBC-2490-1
Adjuster &
Glass Holding Plastic



■ BBC-2490-2
End Cap



■ BBC-2402
90° Corner Connector



■ BBC-2403
180° Corner Connector



■ BBC-2404
Water-removing pad



■ BBC-2405
Rubber



■ BBC-2406
Rubber

OUR STRENGTH: THE QUICK ASSEMBLY

STEP 01

>PREPARATION

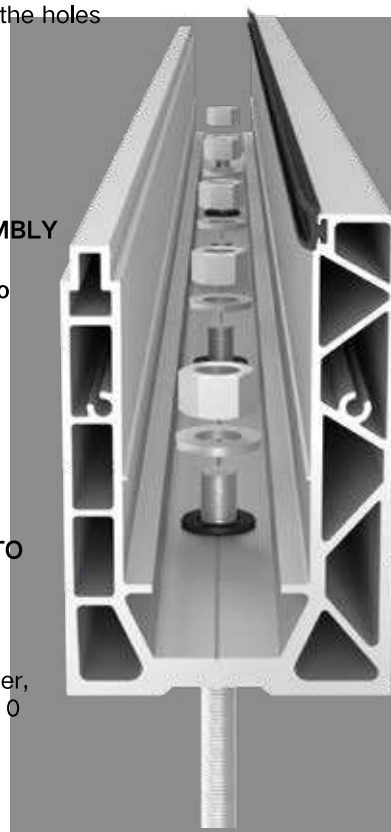
- Position the pre-drilled bar (with external gasket already inserted) to use as a template
- Mark the holes and then drill the floor
- Thoroughly clean the holes
- Apply the resin
- Insert the rods

>START OF ASSEMBLY

- Fasten the profile to the floor

YOU ONLY HAVE TO

Place in sequence: first rubber washer, aluminium profile, second rubber washer, plain washer, nut M10



STEP 02

>Glass housing

- Insert the plastic for glass housing inside the profile
- Prepare the Adjusters by inserting the correct spacers according to the glass to be inserted (10,12,6+6,8+8)

YOU ONLY HAVE TO

Distribute the plastic for glass support (4 for each meter)



STEP 03

> Positioning of the glass

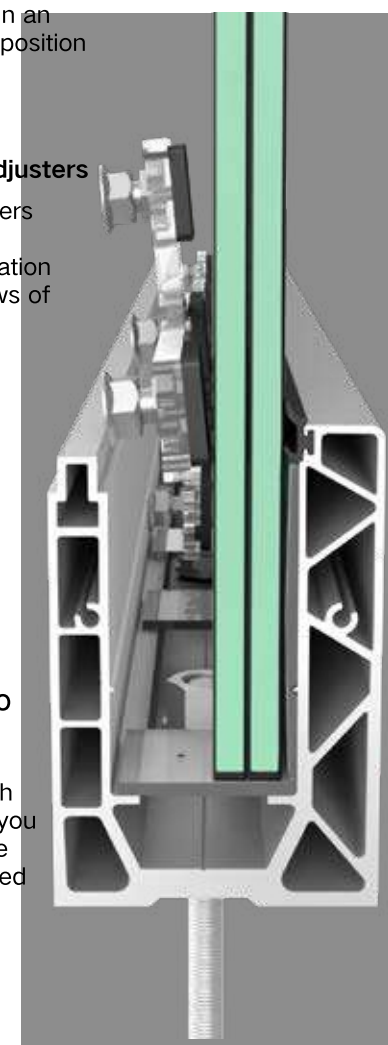
- insert the glass in an inwards inclined position

> Insert the Adjusters

- Insert the adjusters (Adjusters)
- Adjust the inclination
- Tighten both rows of adjusters

YOU ONLY HAVE TO

Insert 4 adjusters (Adjusters) for each meter. Make sure you correctly plumb the glass, having spaced the slabs by 2 cm.



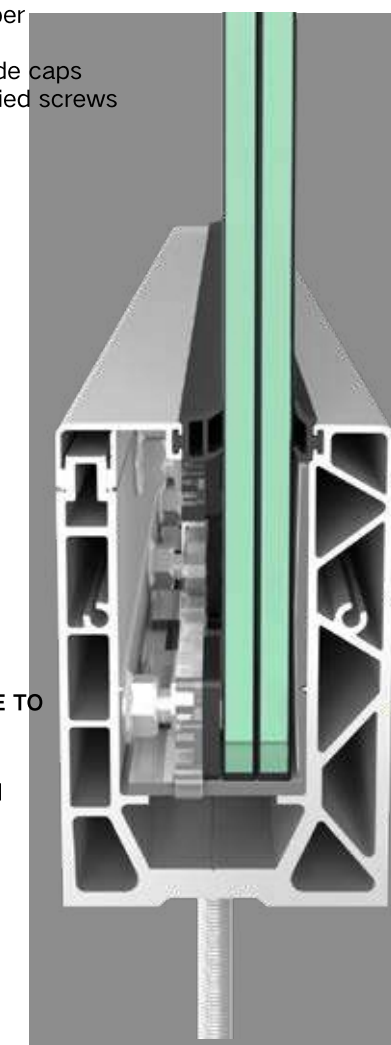
STEP 04

>Final phase

- Insert the upper cladding
- Fasten the side caps with the supplied screws

YOU ONLY HAVE TO

Make sure you have performed a professional installation.

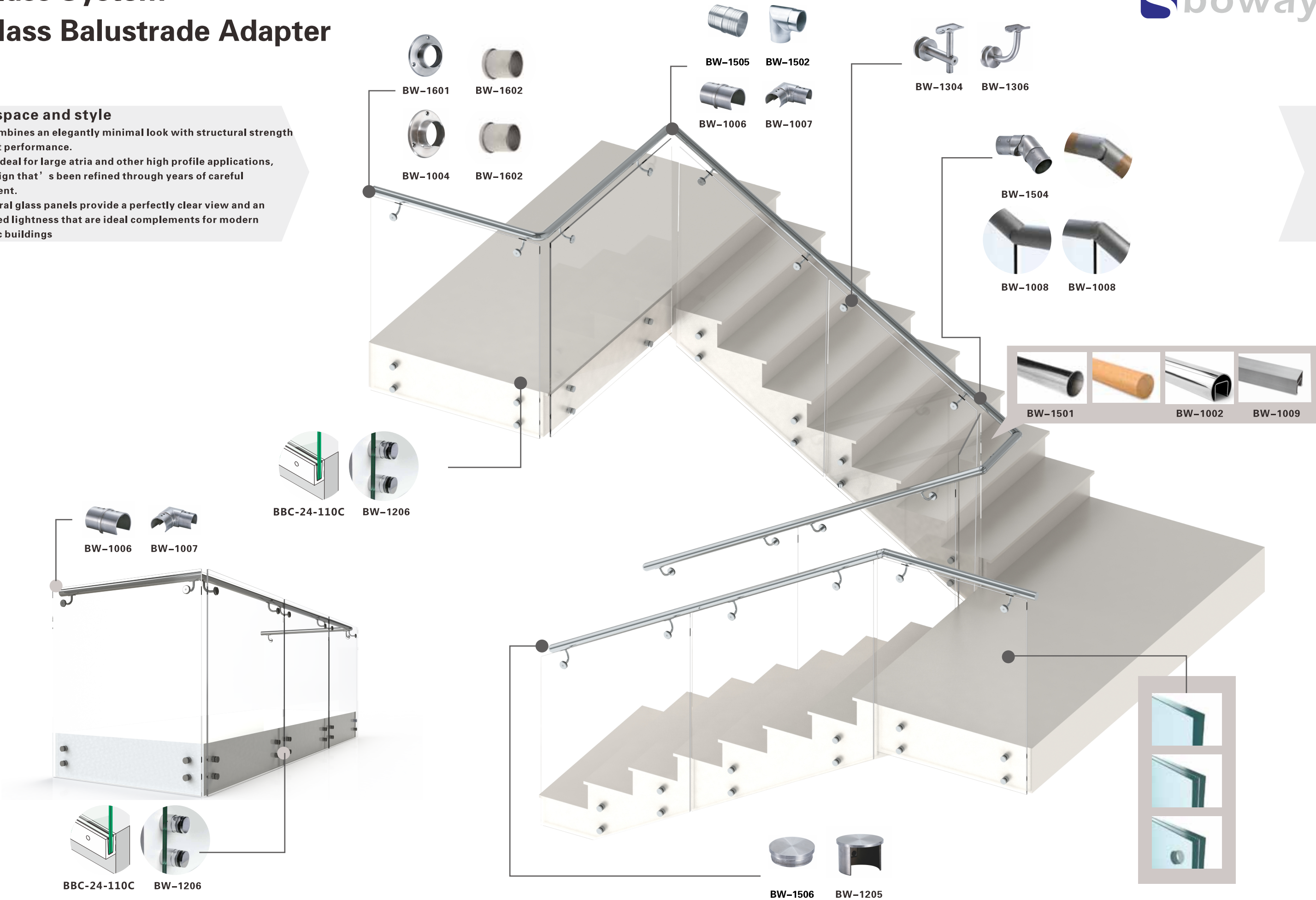


Glass System

Glass Balustrade Adapter

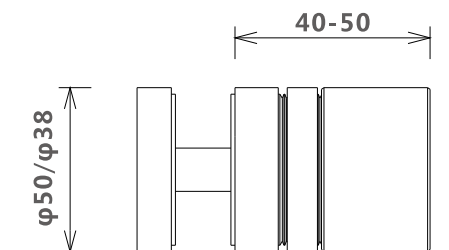
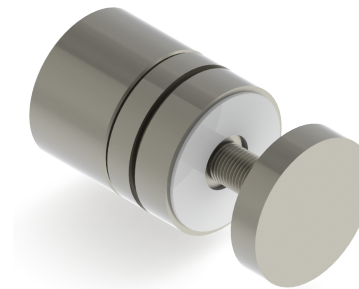
Light, space and style

Crystal combines an elegantly minimal look with structural strength and robust performance. Crystal is ideal for large atria and other high profile applications, with a design that's been refined through years of careful development. Its structural glass panels provide a perfectly clear view and an understated lightness that are ideal complements for modern and classic buildings

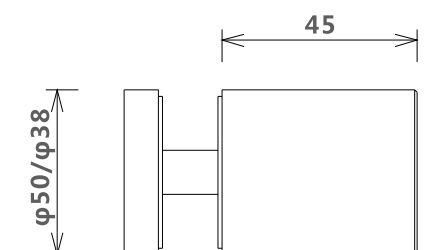


Standoff Glass Adapter

BW-1205

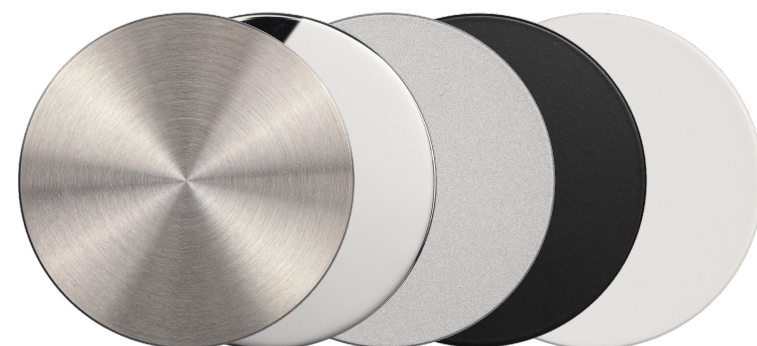


BW-1206

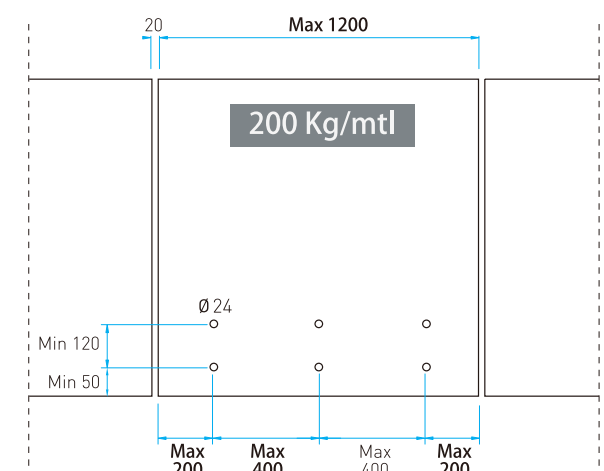
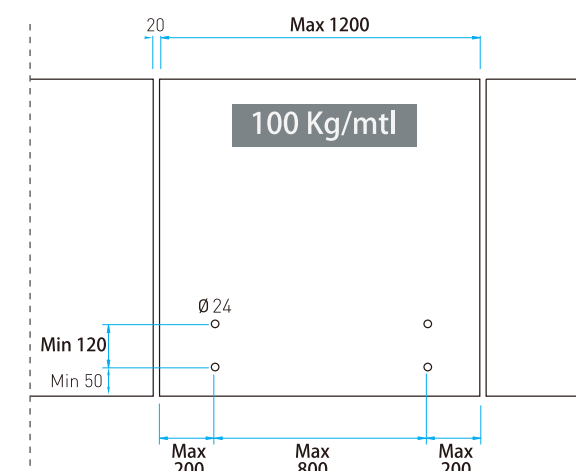


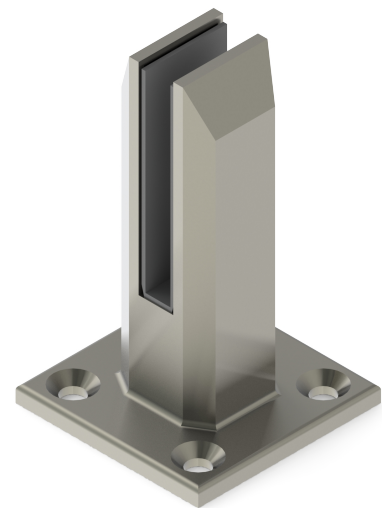
Installation Details

Installation Guide on Glass (Hole Drilling Dimensions)

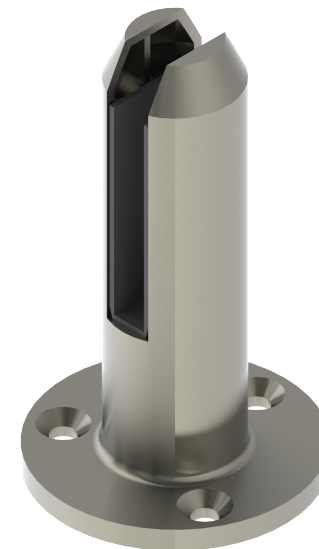
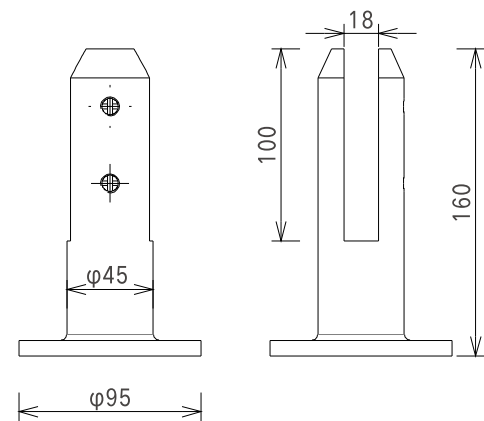


ge sur le verre)

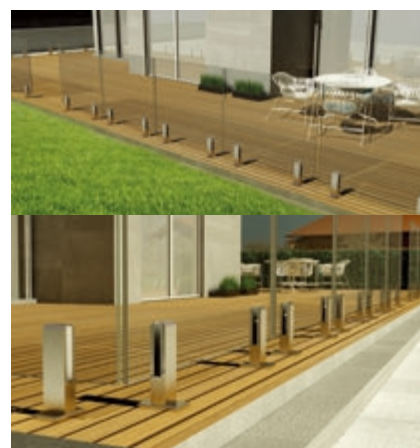
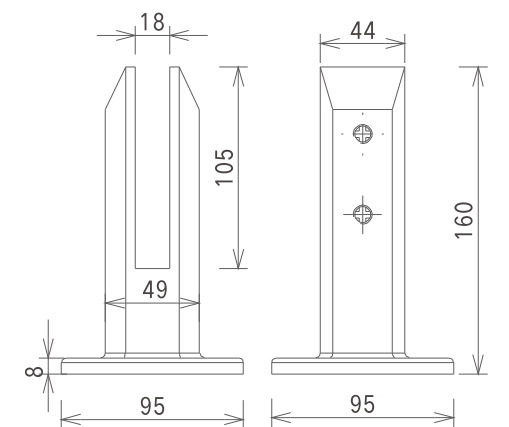


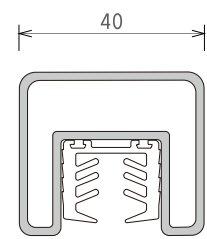


BW-1202

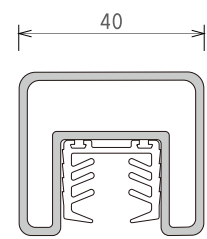


BW-1201

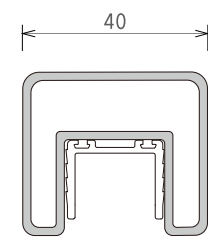




BD-4040/12



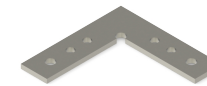
BD-4040/17



BD-4040/20



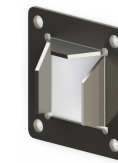
BD-4040-1



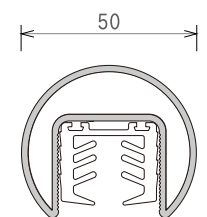
BD-4040-2



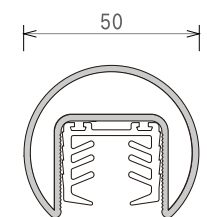
BD-4040-3



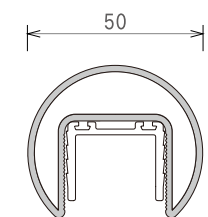
BD-4040-4



BD-5024/12



BD-5024/17



BD-5024/20



BD-5024-1



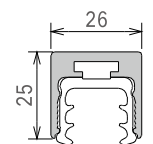
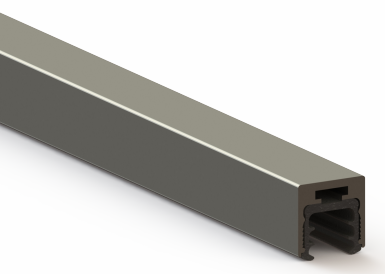
BD-5024-1



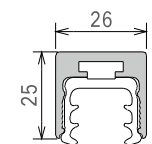
BD-5024-1



BD-5024-1



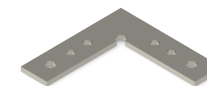
BD-2625/12



BD-2625/17

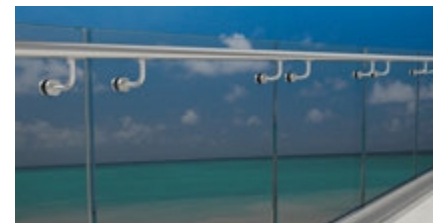
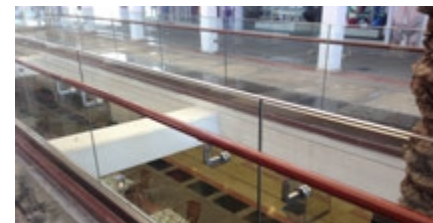


BD-2625-1



BD-2625-2





MIDDLE GLASS SUPPORT

